



IBM Lotus Sametime 8.0

Highlights

- *Find, reach and collaborate with people quickly and easily with integrated instant messaging (IM), presence awareness, Web conferencing and location services*
- *Engage in ongoing conversations using persistent group chat in Lotus Sametime Advanced software*
- *Get answers from a community of experts—even people you don't know—with the broadcast communication tools in Lotus Sametime Advanced software*
- *Connect with people outside your organization using supported public IM networks*
- *Simplify and enhance communications through multiway VoIP and point-to-point video*
- *Use IM and Web conferences from Microsoft Windows, Apple Macintosh or Linux desktops*
- *Stay connected with your team—whether you're in the office, at home or on the road—through support for a variety of mobile devices*
- *Keep your conversations, intellectual property and company data confidential and protected with advanced security features*
- *Use the Web to make your meetings more productive—with colleagues, customers and business partners, no matter where they are*

IBM Lotus® Sametime® software is an award-winning unified communications and collaboration platform that helps you quickly find, connect to and communicate with people, no matter where they are.

Communicate the way you want— instantly

Enterprise IM capabilities allow you to send messages to other people in your organization who use Lotus Sametime software, while federation with supported public IM networks makes it easy to chat with external business contacts at no additional charge. When you need to talk, use built-in VoIP to conduct a PC-to-PC voice conversation with other Lotus Sametime users within your enterprise. With point-to-point video capabilities, you even have the option to see your partner.

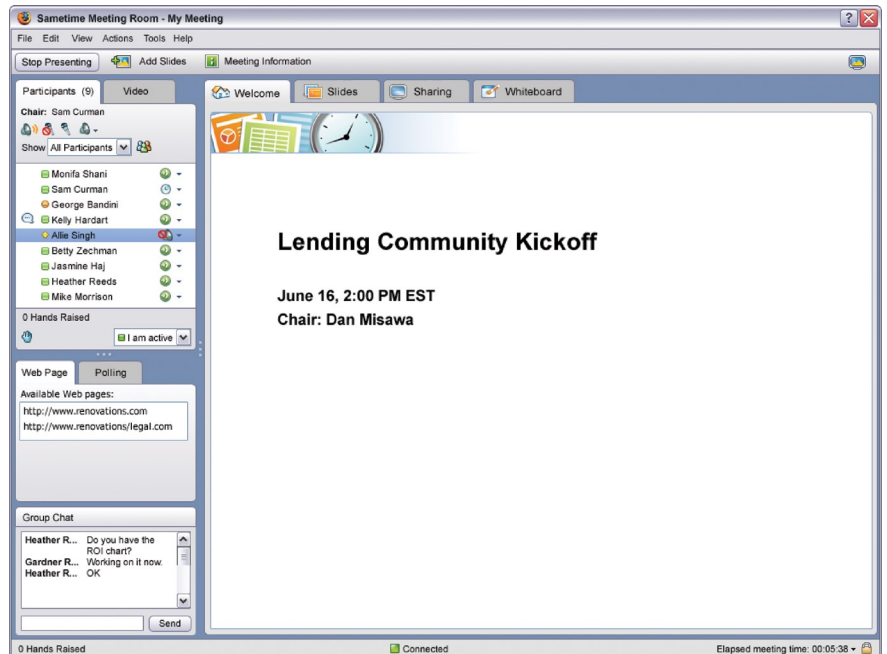
What's new in IBM Lotus Sametime 8 software?

- *Enhanced platform support, including IBM Lotus Domino® 8, VMware software, Microsoft Office and Microsoft Outlook 2007*
- *New point-to-point video support for Apple Macintosh users*
- *Expanded mobile device support, including Nokia Eseries, Sony Ericsson and Microsoft Windows Mobile 6 devices*
- *Lotus Sametime Gateway serviceability and installation improvements*
- *New federation with Extensible Messaging and Presence Protocol (XMPP)–based IM networks*

Plus, with Lotus Sametime Advanced 8 software, you also get:

- *Persistent group chat for ongoing conversations*
- *Broadcast communication tools to enable you to get help from individuals—whether you know them or not*
- *Instant screen sharing to enable you to share your desktop instantaneously*
- *Location services that automatically store geographic location information so you can reuse it later*

To quickly communicate visual information, paste a snapshot from your PC into an instant message and annotate the screen grab before sending it. These features create a more personal collaboration experience and can help reduce communications costs.



With Web conferencing capabilities, you can meet and share presentations, applications and desktops as if everyone were in the same room.

To manage multiple conversations, use the tabbed chat feature to consolidate chats into one window, and move more easily between conversations while reducing desktop clutter. The chat history feature lets you store and view prior conversations, so you can revisit information when needed. Spell-check is also built in, as is a variety of emoticons to help you visually express the meaning of your messages. The enhanced capabilities in IBM Lotus Sametime 8 software allow you to use a toolbar in Microsoft® Outlook and Microsoft Office software to initiate chats or schedule Web conferences—without leaving your Microsoft Outlook in-box or Microsoft Office documents, spreadsheets or presentations.

Find people more quickly and improve responsiveness

Whether you use Apple Macintosh, Microsoft Windows® or Linux® technologies, Lotus Sametime software makes finding people—and the answers you need—fast and easy. Contact information from your corporate directory can

include a picture, providing a “face” to colleagues you haven’t met and helping you establish more personal relationships. Type-ahead contact search makes it easy to find contacts.

You can also minimize interruptions while remaining available to people who need to reach you. With the selective privacy feature, you can choose the people to whom you’d like to be available, such as immediate team members or your manager. And alerts can immediately notify you when a contact becomes available.

Close distances between people with Web conferencing

Lotus Sametime Web conferencing capabilities give people a fast, easy and cost-effective way to schedule, manage and attend meetings, without spending time, money and scarce energy on travel, lodging and meeting facilities. You can upload presentations or share applications, demonstrations or even your whole desktop. When

Choose the right Lotus Sametime solution for your business

	IBM Lotus Sametime Advanced 8 software	IBM Lotus Sametime Standard 8 software	IBM Lotus Sametime Entry 8 software	IBM Lotus Sametime Unified Telephony software	IBM Lotus Sametime Unyte services
Instant messaging	•	•	•		
Presence awareness	•	•	•		
Persistent group chat	•				
Broadcast tools	•				
Instant screen sharing	•				
Geographic location services	•				
Microsoft Office and Microsoft Outlook integration	•	•	•		
On-premise Web conferencing	•	•			
Web conferencing as a service					•
VoIP chat	•	•			
Video	•	•			
Support for mobile devices	•	•			
Interoperability with supported public IM networks	•	•			
Access to plug-in capabilities	•	•			
Softphone	Via 3 rd party	Via 3 rd party		•	
Aggregated presence	Via 3 rd party	Via 3 rd party		•	
Click to call/conference	Via 3 rd party	Via 3 rd party		•	
Call management, rules and routing	Via 3 rd party	Via 3 rd party		•	
Telephony integration middleware				•	

appropriate, you can let participants make updates to your files by giving them control of your desktop or perhaps allow a help-desk consultant to take control of your computer for fast and easy technical support. Exchange ideas and arrive at decisions more quickly in a Web conference with included group chat, IM, whiteboard and polling capabilities. And help enhance your meetings with optional integrated audio and video capabilities. Lotus Sametime software can help you hold more productive meetings and reduce expenses, and the IBM Lotus Sametime Unyte™ product offers the alternative of using a service to hold Web conferences.

Share information confidently with advanced security features

Lotus Sametime software can encrypt instant messages, VoIP voice chats and point-to-point video conversations to help you protect sensitive information. In fact, the security-rich communication available in Lotus Sametime software is one reason why leading organizations in the banking, financial, pharmaceutical, government and military industries rely on it. Lotus Sametime IM conversations between enterprises can also be encrypted to

help keep discussions confidential. Authentication gives you the confidence of knowing that the people you communicate with are who they say they are, while password protection helps ensure that only invited participants can attend Web conferences.

Extend your unified communications strategy

IBM continues its commitment to working with leading telephony, audio and video providers so you can take advantage of the most advanced collaboration capabilities available. With Lotus Sametime software, you



get a comprehensive, unified client experience that can help ease the convergence of voice, data and video technologies onto a single, flexible communications and collaboration platform, no matter which provider or providers you are working with. The integration available today allows you to take advantage of capabilities including:

- *Click-to-call and click-to-conference.*
- *Softphone integration.*
- *Aggregated telephony presence.*
- *Incoming call management.*
- *Voicemail integration.*

In addition, IBM Lotus Sametime Unified Telephony software is being designed to help businesses more easily access and manage telephone communications directly inside the Lotus Sametime or Lotus Notes client, while simplifying the integration into multivendor telephony environments.

Put your trust in a marketplace-leading solution

With the award-winning Lotus Sametime platform, you get the creative, innovative and flexible communications and collaboration capabilities you need, regardless of the type or size of your organization. Whether you're just getting started with IM, want to extend your communications capabilities or need to integrate telephony into your unified communications environment, Lotus Sametime software provides an effective and cost-efficient way of helping people connect, collaborate and communicate.

For more information

To learn more about IBM Lotus Sametime 8 software, please contact your IBM sales representative or IBM Business Partner, or visit:

ibm.com/sametime

© Copyright IBM Corporation 2008

Lotus Software
IBM Software Group
One Rogers Street
Cambridge, MA 02142
U.S.A.

Produced in the United States of America
04-08
All Rights Reserved

IBM, the IBM logo, Domino, Lotus, Lotus Notes, Notes and Sametime are trademarks or registered trademarks of International Business Machines Corporation in the United States, other countries, or both.

Microsoft and Windows are trademarks of Microsoft Corporation in the United States, other countries, or both.

Linux is a registered trademark of Linus Torvalds in the United States, other countries, or both.

Unyte is a trademark of WebDialogs, Inc., in the United States, other countries, or both.

Other company, product and service names may be trademarks or service marks of others.

References in this publication to IBM products or services do not imply that IBM intends to make them available in all countries in which IBM operates. The information contained in this documentation is provided for informational purposes only. While efforts were made to verify the completeness and accuracy of the information contained in this documentation, it is provided "as is" without warranty of any kind, express or implied. In addition, this information is based on IBM's current product plans and strategy, which are subject to change by IBM without notice. IBM shall not be responsible for any damages arising out of the use of, or otherwise related to, this documentation or any other documentation. Nothing contained in this documentation is intended to, nor shall have the effect of, creating any warranties or representations from IBM (or its suppliers or licensors), or altering the terms and conditions of the applicable license agreement governing the use of IBM software.